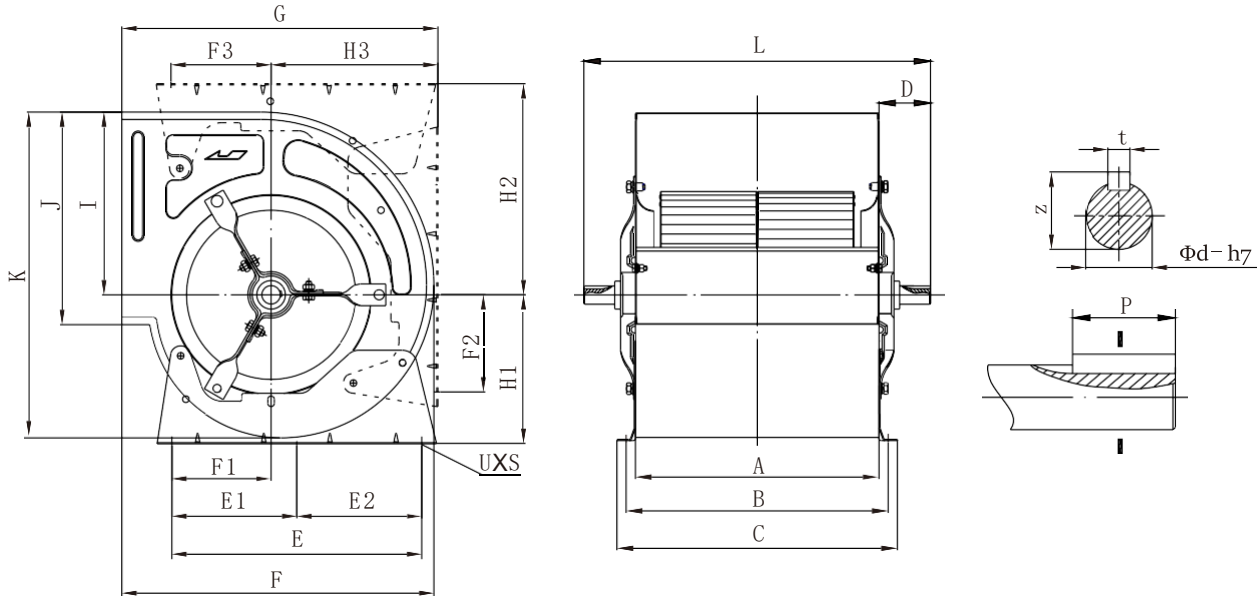




### DTC-D dimension

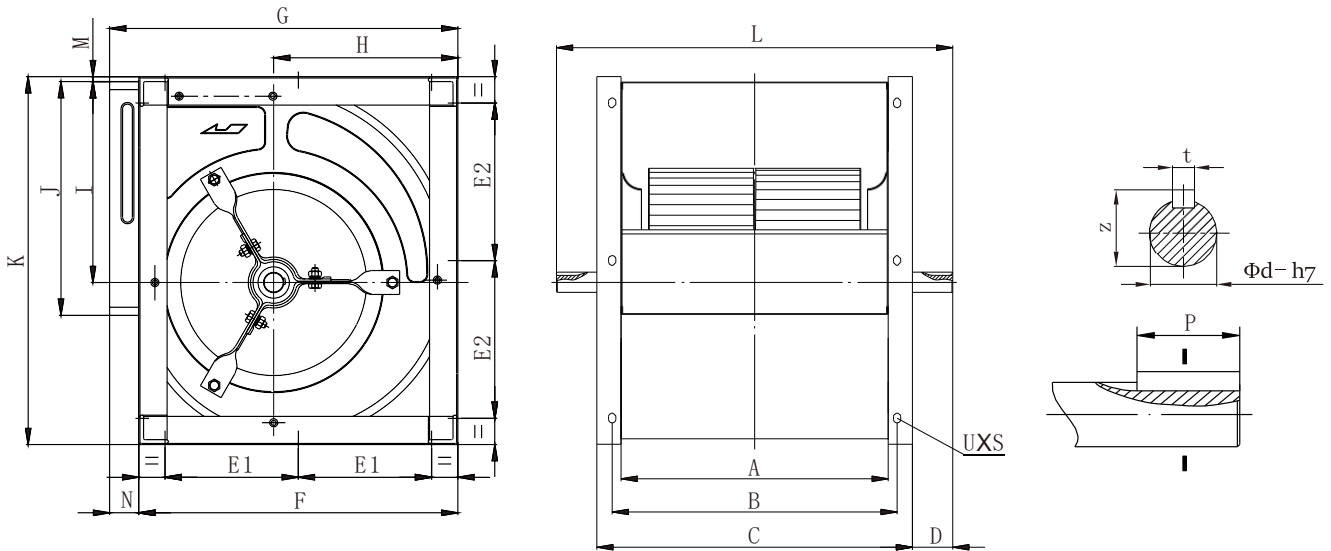


Model	A	B	C	D	E	E1	E2	F	F1	F2	F3	G	H1	H2	H3	I	J	K	L	φd	t	z	P	UXS
7-7	259	279	299	61	180			312	90	90	90	316	164	224	164	192	228	328	380	20	6	22.8	32	11X16
9-9	298	323	348	70	300	135	165	380	123	124	119	384	178	253	199	216	262	389	438	25	8	28.3	32	11X16
10-10	331	356	381	70	340	170	170	424	135	132	136	430	198	287	227	249	289	443	471	25	8	28.3	32	11X16
12-12	395	420	445	70	408	189	219	491	161	153	161	496	232	332	266	294	341	521	535	25	8	28.3	32	11X16
15-15	471	496	521	100	495	232	263	568	201	211	197	573	272	380	309	342	404	609	671	30	8	33.3	50	11X16
18-18	557	582	607	100	606	318	288	684	278	283	262	690	340	457	376	415	478	739	757	30	8	33.3	50	11X16

Note : Plage de tolérance des dimensions globales ±4mm.



### DTC-K dimension

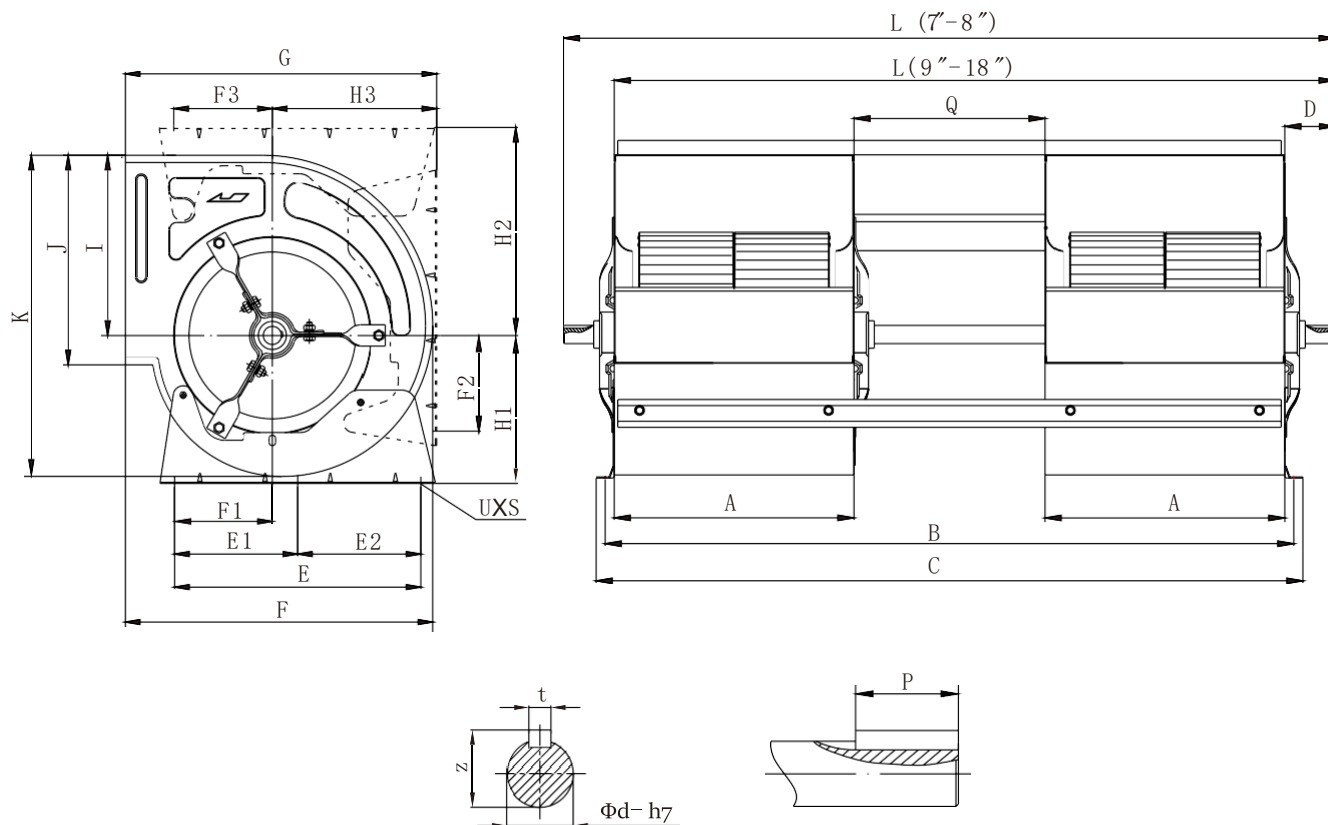


Model	A	B	C	D	E	E1	E2	F	F1	F2	F3	G	H1	H2	H3	I	J	K	L	$\Phi d$	t	z	P	UXS
7-7	259	279	299	61	180			312	90	90	90	316	164	224	164	192	228	328	380	20	6	22.8	32	11X16
9-9	298	323	348	70	300	135	165	380	123	124	119	384	178	253	199	216	262	389	438	25	8	28.3	32	11X16
10-10	331	356	381	70	340	170	170	424	135	132	136	430	198	287	227	249	289	443	471	25	8	28.3	32	11X16
12-12	395	420	445	70	408	189	219	491	161	153	161	496	232	332	266	294	341	521	535	25	8	28.3	32	11X16
15-15	471	496	521	100	495	232	263	568	201	211	197	573	272	380	309	342	404	609	671	30	8	33.3	50	11X16
18-18	557	582	607	100	606	318	288	684	278	283	262	690	340	457	376	415	478	739	757	30	8	33.3	50	11X16

Note : Plage de tolérance des dimensions globales  $\pm 4$ mm.



### DTC-2D dimension

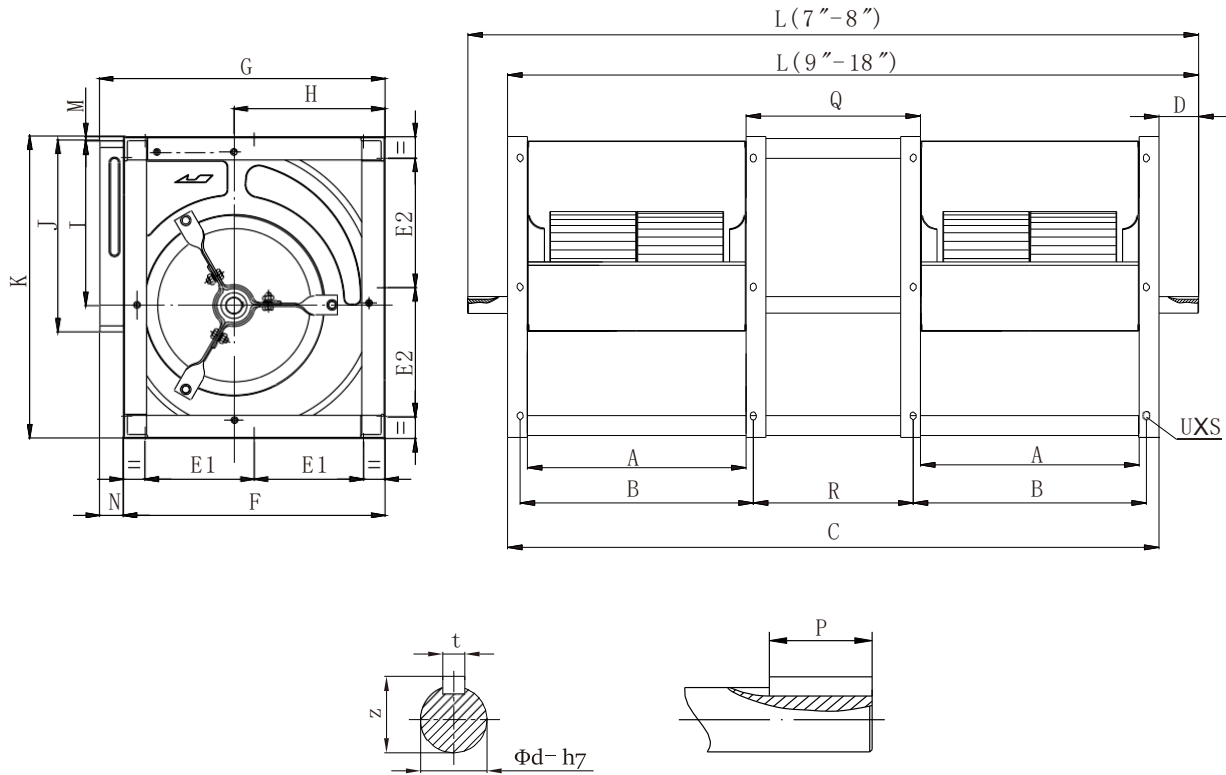


Model	A	B	C	D	E	E1	E2	F	F1	F2	F3	G	H1	H2	H3	I	J	K	L	$\phi d$	t	z	P	UXS
7-7	259	279	299	61	180	/	/	312	90	90	90	316	164	224	164	192	228	328	380	20	6	22.8	32	11X16
9-9	298	323	348	70	300	135	165	380	123	124	119	384	178	253	199	216	262	389	438	25	8	28.3	32	11X16
10-10	331	356	381	70	340	170	170	424	135	132	136	430	198	287	227	249	289	443	471	25	8	28.3	32	11X16
12-12	395	420	445	70	408	189	219	491	161	153	161	496	232	332	266	294	341	521	535	25	8	28.3	32	11X16
15-15	471	496	521	100	495	232	263	568	201	211	197	573	272	380	309	342	404	609	671	30	8	33.3	50	11X16
18-18	557	582	607	100	606	318	288	684	278	283	262	690	340	457	376	415	478	739	757	30	8	33.3	50	11X16

Note : Plage de tolérance des dimensions globales  $\pm 4mm$ .



### DTC-2K dimension



Model	A	B	C	D	E	E1	E2	F	F1	F2	F3	G	H1	H2	H3	I	J	K	L	$\Phi d$	t	z	P	UXS
7-7	259	279	299	61	180	/	/	312	90	90	90	316	164	224	164	192	228	328	380	20	6	22.8	32	11X16
9-9	298	323	348	70	300	135	165	380	123	124	119	384	178	253	199	216	262	389	438	25	8	28.3	32	11X16
10-10	331	356	381	70	340	170	170	424	135	132	136	430	198	287	227	249	289	443	471	25	8	28.3	32	11X16
12-12	395	420	445	70	408	189	219	491	161	153	161	496	232	332	266	294	341	521	535	25	8	28.3	32	11X16
15-15	471	496	521	100	495	232	263	568	201	211	197	573	272	380	309	342	404	609	671	30	8	33.3	50	11X16
18-18	557	582	607	100	606	318	288	684	278	283	262	690	340	457	376	415	478	739	757	30	8	33.3	50	11X16

Note : Plage de tolérance des dimensions globales  $\pm 4$ mm.

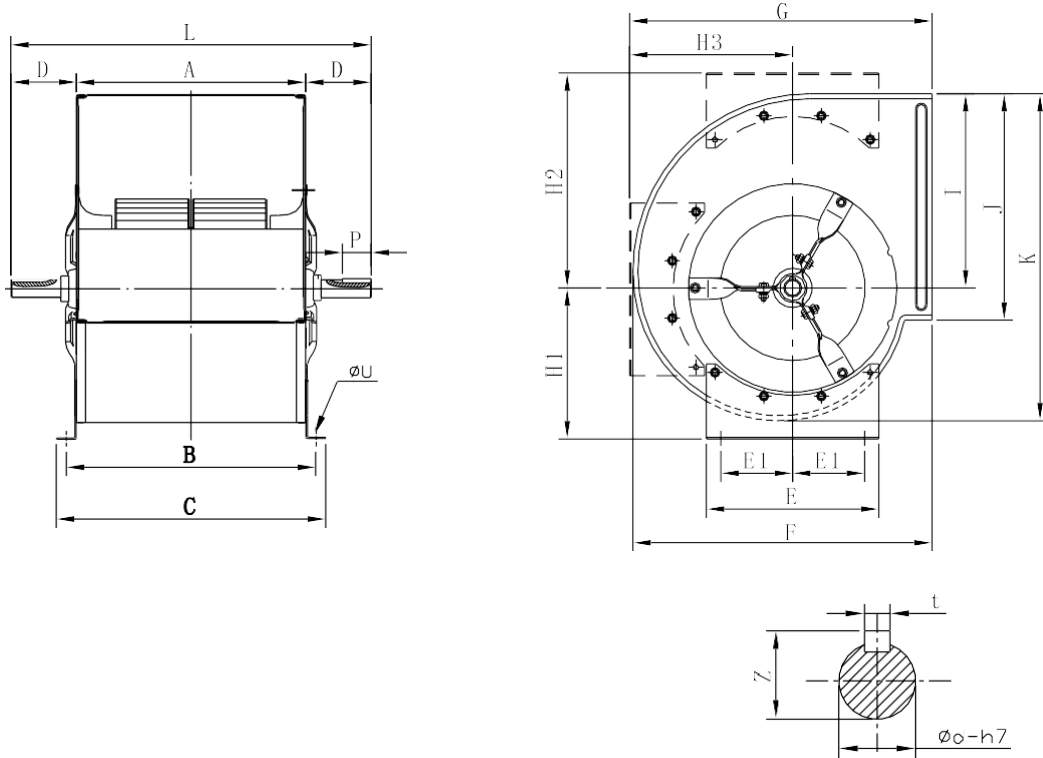


## Limites opérationnelles

			7-7	9-9	10-10	12-12	15-15	18-18	
Max Absorbed Power		D/K	kw	1	3	4	4	5.5	7.5
		2D	kw	2	6	8	8	11	15
		2K	kw	2	6	8	8	11	15
Max Speed		D/K	rpm	2200	1800	1600	1400	1100	900
		2D	rpm	2000	1500	1400	1200	900	700
		2K	rpm	2000	1500	1400	1200	900	700
Temp. range (min. -20°C)		D/K	max.°C	40	40	40	40	40	40
		2D/2K	max.°C	40	40	40	40	40	40
Wheel	diameter		mm		241	270	321	381	458
	weight		kg		2.5	4.1	6.2	8.1	14
	J		kgm <sup>2</sup>		0.024	0.05	0.107	0.198	0.49
Fan Weight		D	kg	6	11.5	15.5	19	30	43
		K	kg	8.5	11.7	15.7	19.5	31	44
		2D	kg	14	22.5	30	45	60	86
		2K	kg	20	23.5	32.4	46.5	62	88



TAE-D Dimension



[mm]

Model	A	B	C	D	E	E1	F	G	H1	H2	H3	I	J	K	L	Ød	t	Z	P	ØU
TAE500	635	675	715	133	500	225	796	800	375	568	448	543	632	909	901	35	10	38.3	63	10
TAE560	715	765	815	143	590	265	890	892	416	634	502	605	712	1001	1001	40	12	43.3	63	15

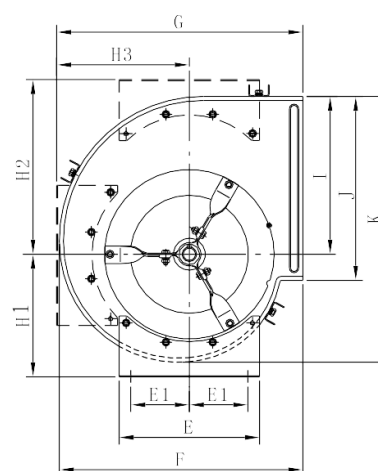
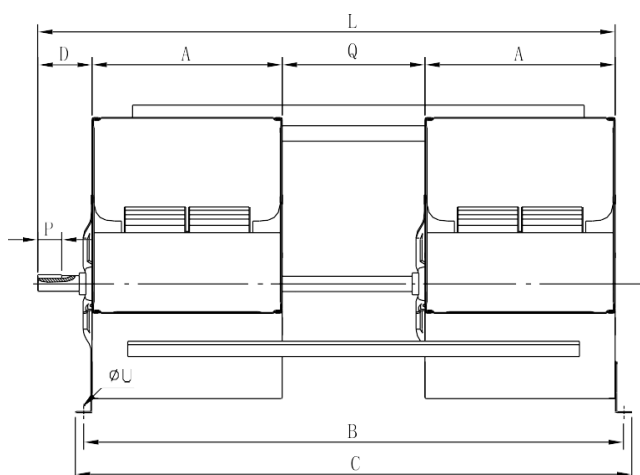
Note: Plage de tolérance des dimensions globales ±4mm



### Limites opérationnelles et dimensions



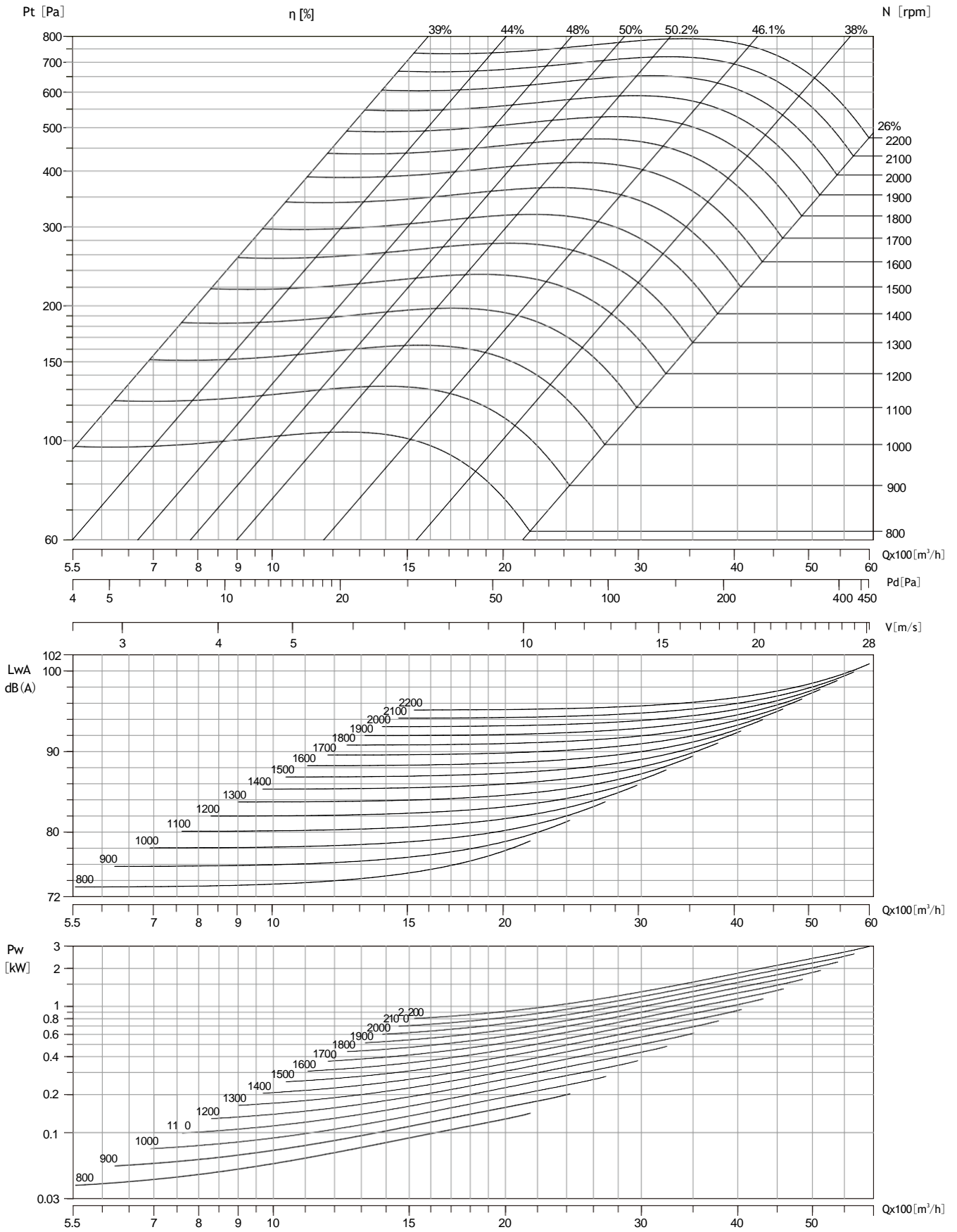
	Type		500	560
<b>Max power</b>	D-K	Kw	11	11
	H	Kw	18.5	22
	2D/2K	Kw	13	
	2H	Kw	22	22
<b>Max speed</b>	D-K	rpm	1000	900
	H	rpm	1200	1100
	2D/2K	rpm	700	
	2H	rpm	900	800
<b>Temp range min - 20°C</b>	D-K	Max °C	40	40
	H	Max °C	60	60
	2D/2K	Max °C	40	
	2H	Max °C	60	60
<b>Fan weight</b>	D	Kg	68	78
	K	Kg	73	86
	H	Kg	80	103
	2D	Kg	142	
	2K	Kg	153	
	2H	Kg	205	259





Air Density: 1.2 kg/m<sup>3</sup>

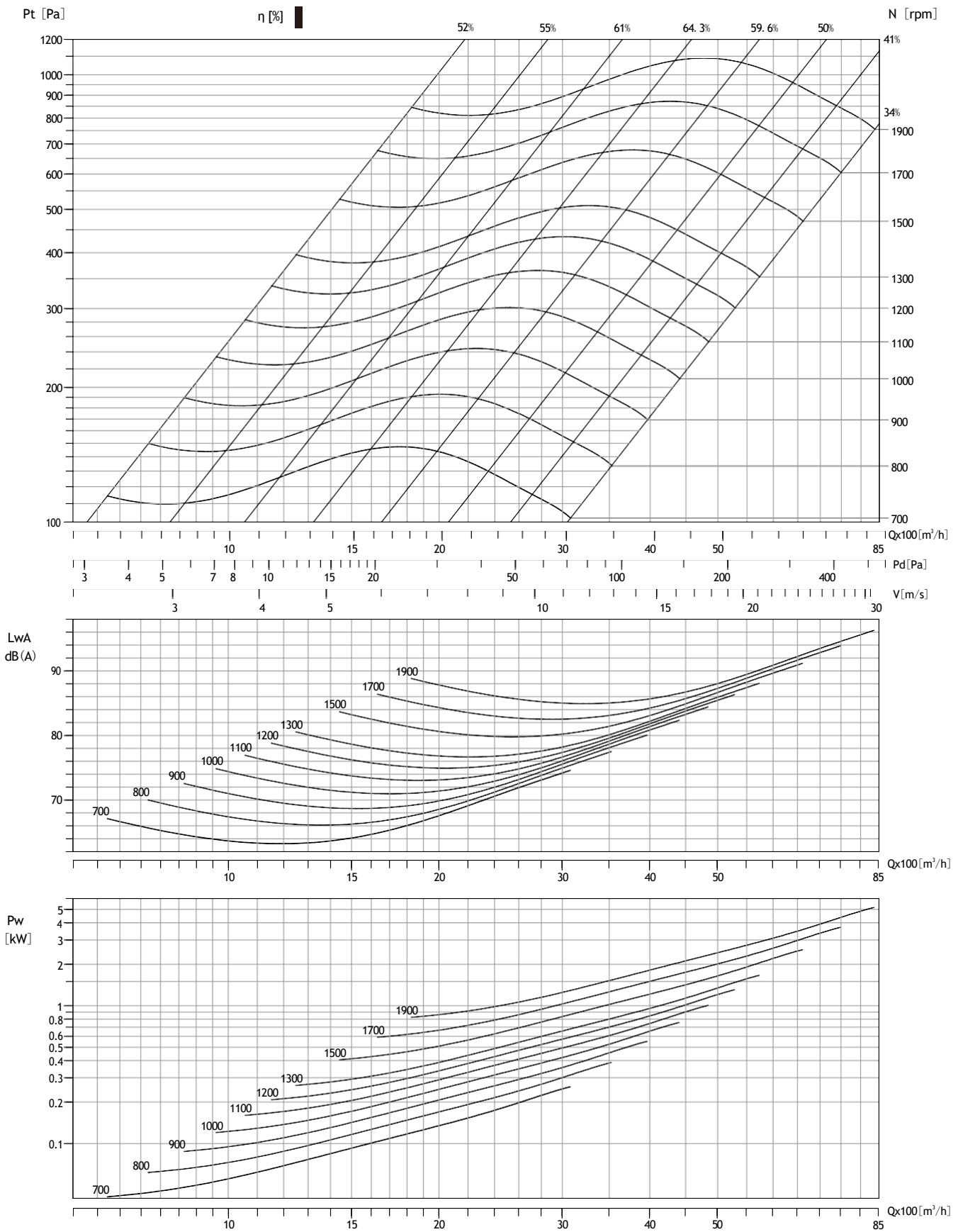
DTC 7-7





# DTC9-9

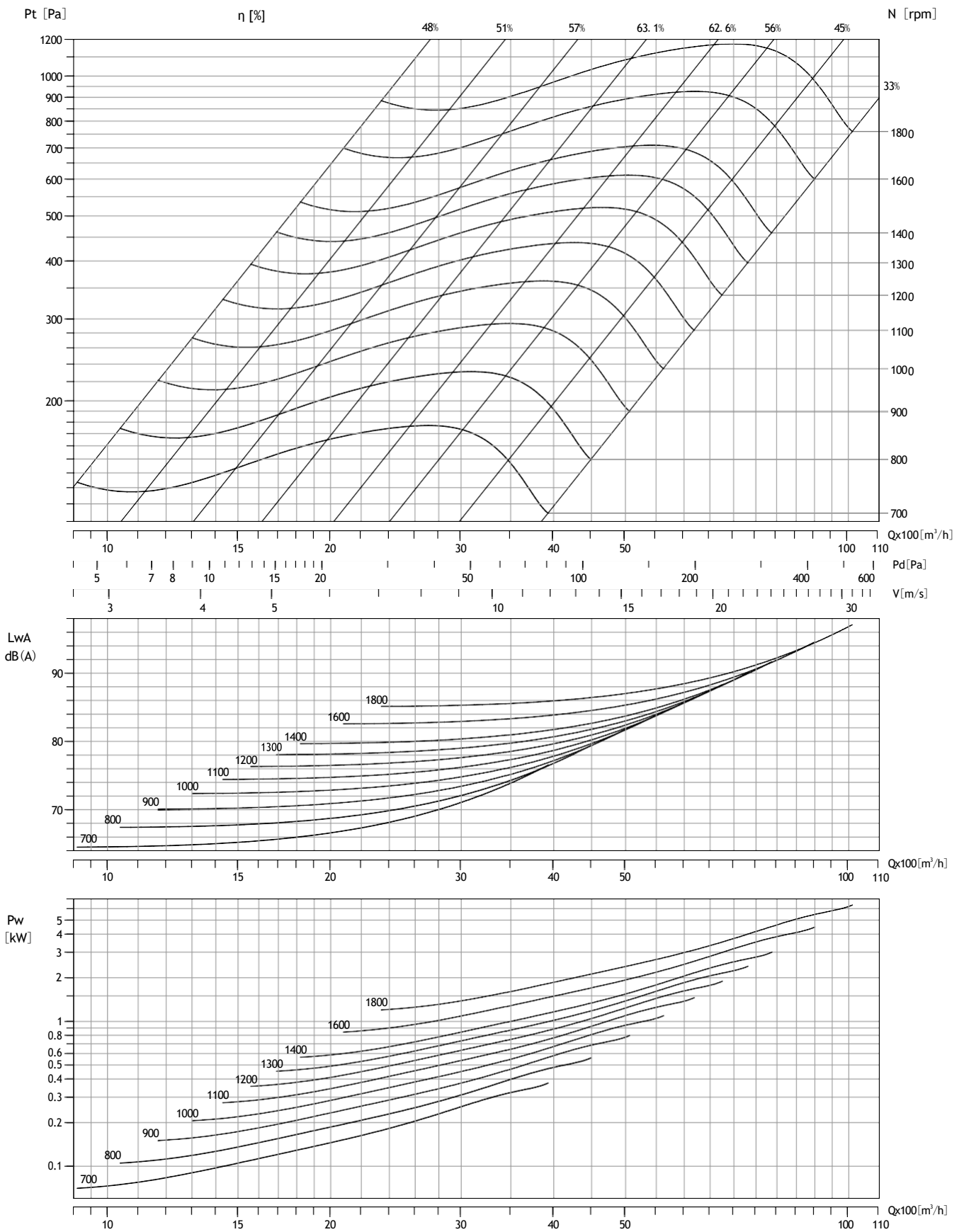
Air Density: 1.2 kg/m<sup>3</sup>





# DTC10-10

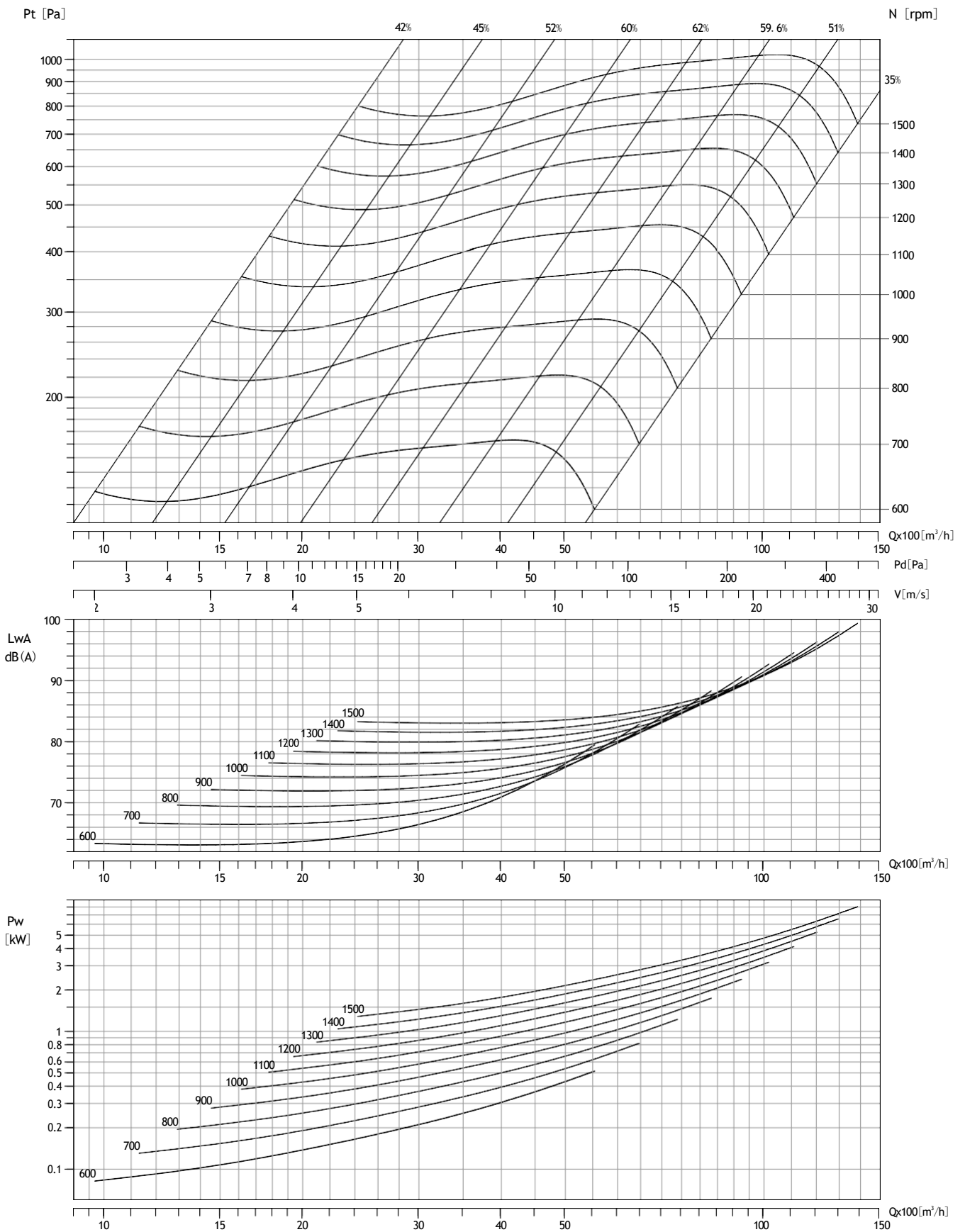
Air Density: 1.2 kg/m<sup>3</sup>





# DTC12-12

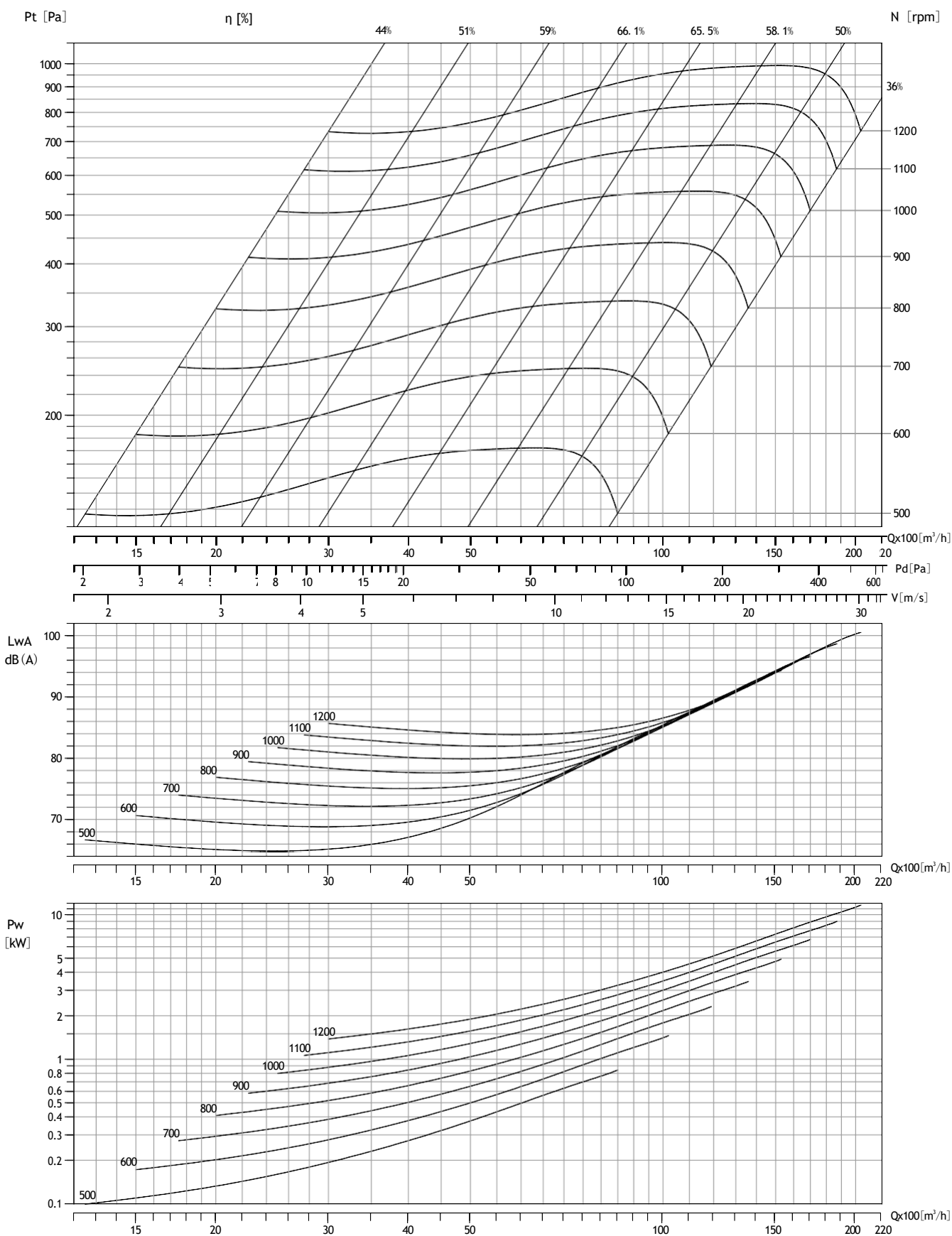
Air Density: 1.2 kg/m<sup>3</sup>





# DTC15-15

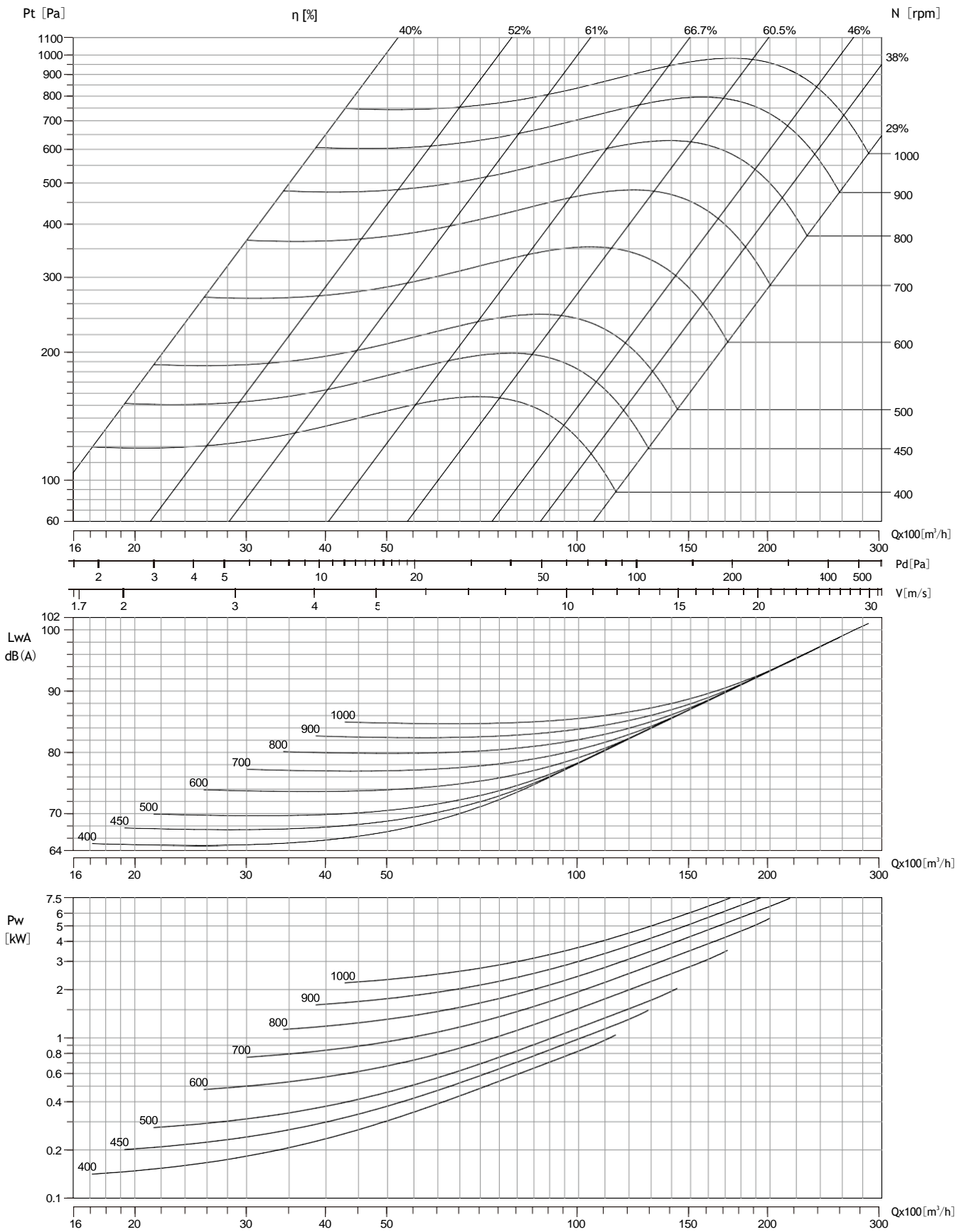
Air Density: 1.2 kg/m<sup>3</sup>





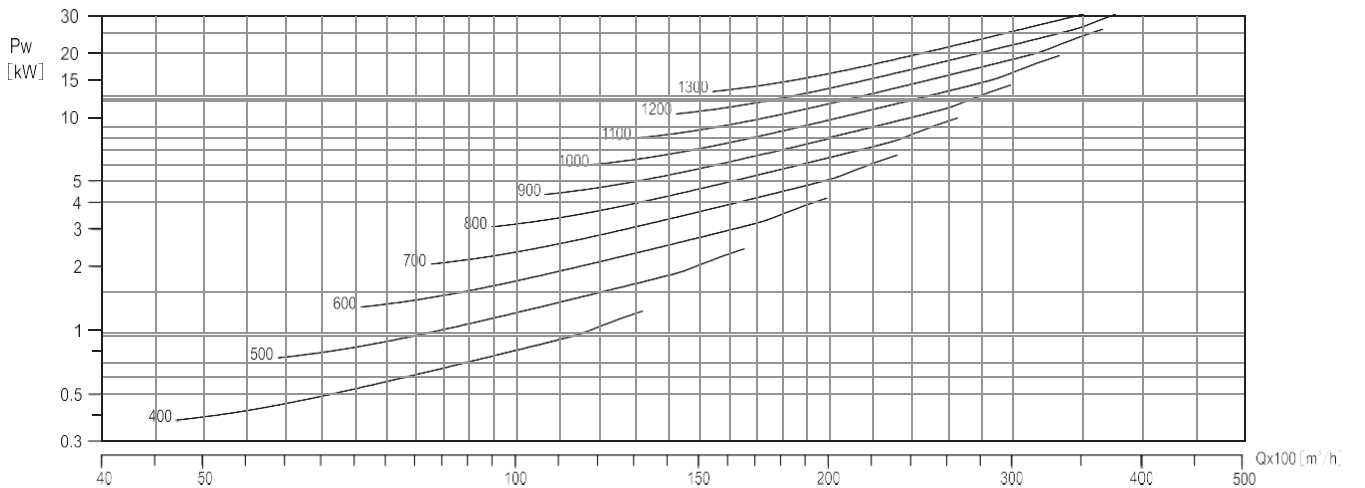
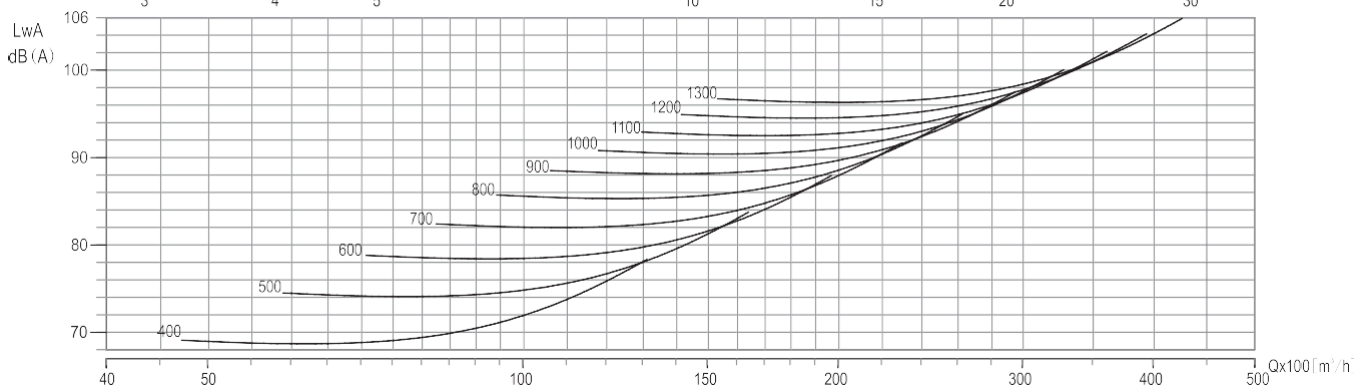
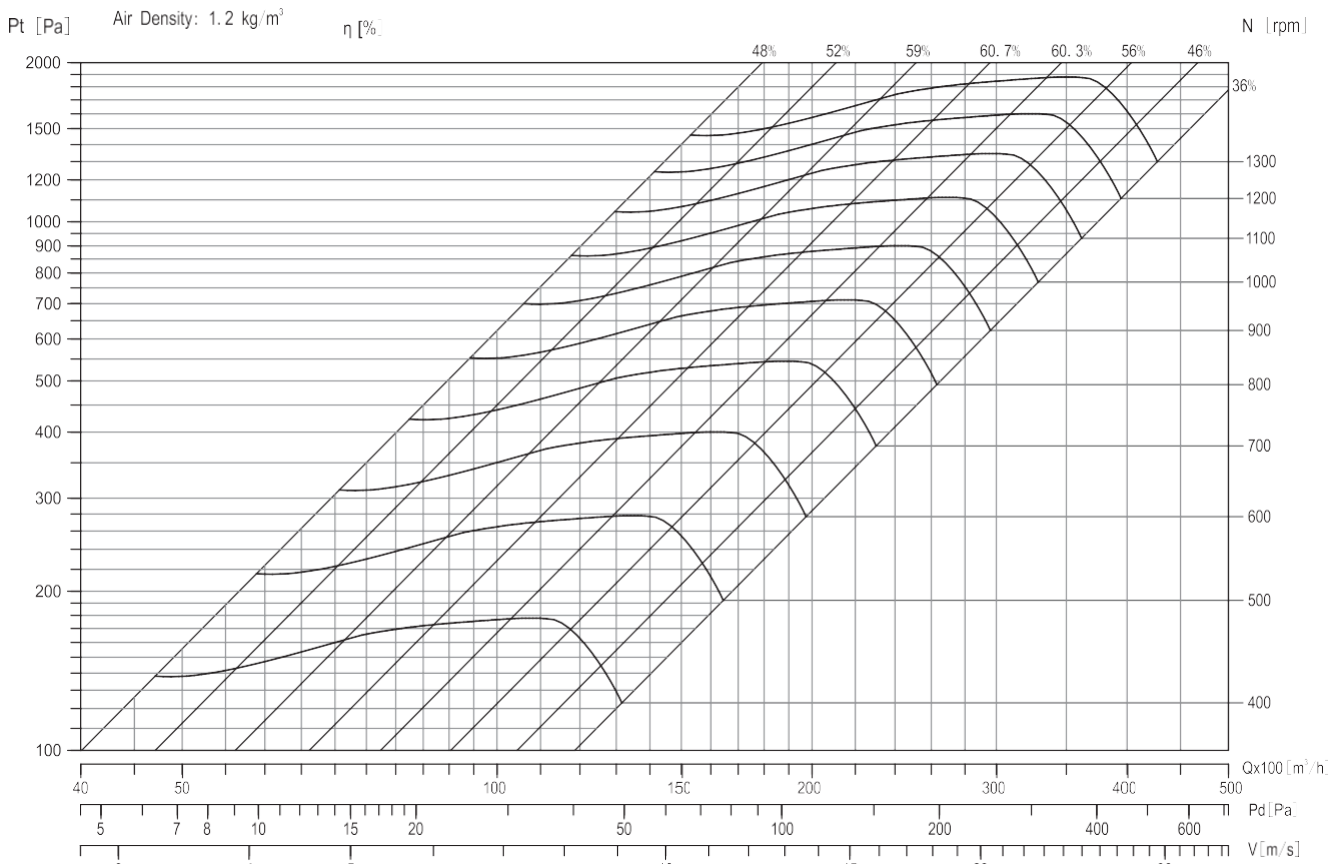
# DTC18-18

Air Density: 1.2 kg/m<sup>3</sup>





# TAE500





# TAE560

Air Density: 1.2 kg/m<sup>3</sup>

